



Lavender House, 1B Ratcliffe Cross Street, E1 0HS  
**£550,000**

EPC **B**





A bright and spacious two bedroom apartment located within this popular development.

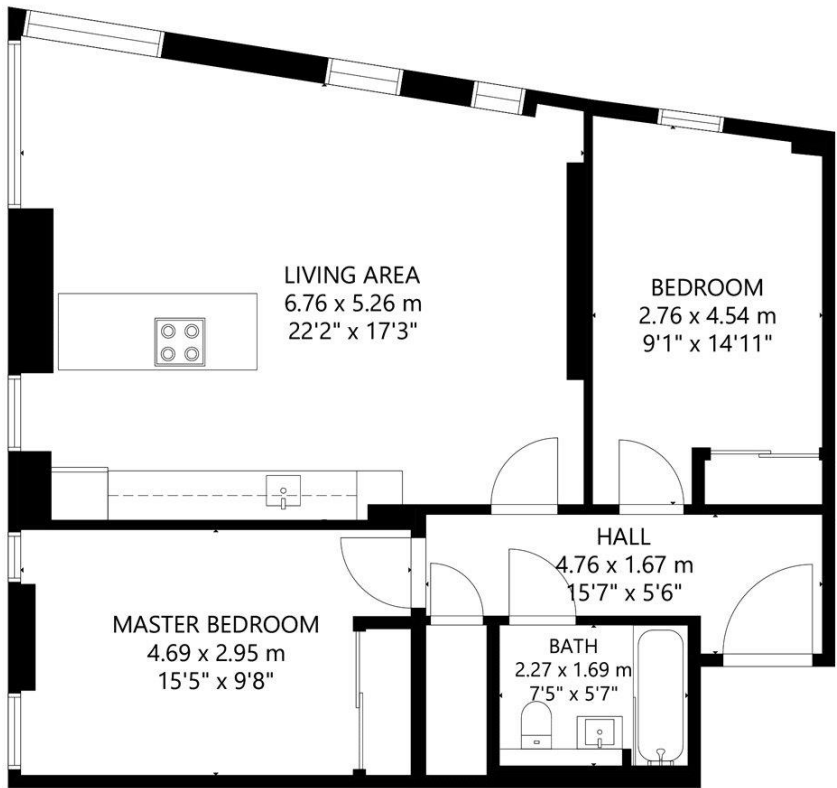
Situated on the third floor the apartment offers good sized open plan living accommodation with dual aspect views from floor to ceiling double glazed windows. High specification includes a contemporary kitchen, wild walnut Amtico flooring, integrated sound system and video entry system.

Lavender House is a smart contemporary development on the borders of Limehouse and Wapping just 0.2 miles from Limehouse DLR and mainline station.

Offering fantastic links to the City and Canary Wharf (approx. 5 minutes) and Oxford Street (approx. 20 minutes).



- Open Plan Reception
- Two Double Bedrooms, One Bathroom
- Purpose Built
- Dual Aspect
- Walnut Amtico Flooring
- Video Entry System
- Close to Limehouse DLR Station



GROSS INTERNAL AREA  
TOTAL: 839 sq ft, 78 m<sup>2</sup>

SIZE AND DIMENSIONS ARE APPROXIMATE, ACTUAL MAY VARY.



Viewing arrangement by appointment 0203 911 3660

[ec2@stirlingackroyd.com](mailto:ec2@stirlingackroyd.com)

40 Great Eastern Street, EC2A 3EP

**[stirlingackroyd.com](http://stirlingackroyd.com)**

STIRLING ACKROYD\_STI025\_CDS170134\_DTL004\_10

