



City Pavilion, 33 Britton Street, EC1M 5UG
£1,000,000





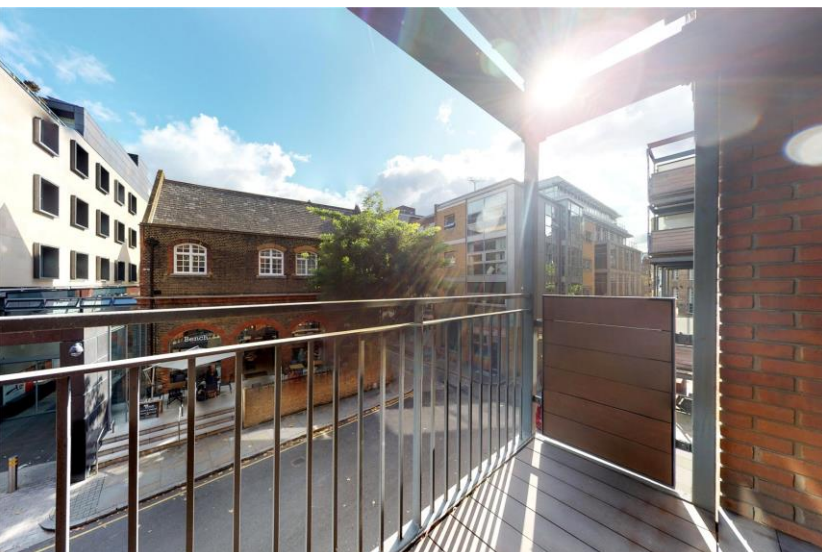
A fantastic split-level apartment located in the prestigious City Pavilion development in Central Clerkenwell.

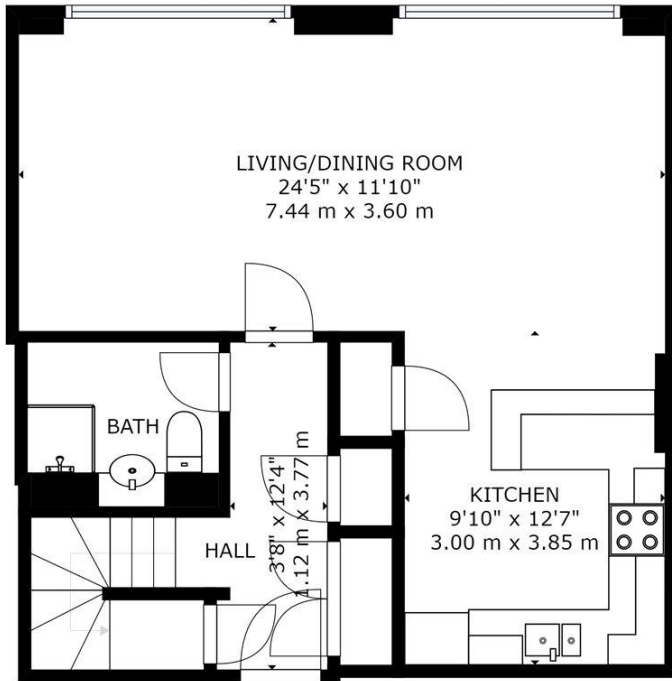
Located moments from Farringdon Station (Metropolitan, Circle, Hammersmith & City lines, National Rail Services and the highly anticipated Crossrail) this two bed, two bath apartments spanning approx. 1073sq. ft. has been well maintained and sparingly used as a pied-a-terre.

The downstairs comprises a spacious open plan lounge and kitchen/diner with double height ceilings and an abundance of natural light from the large Eastern facing floor to ceiling windows, family bathroom, and ample hallway storage. Upstairs houses a mezzanine bedroom/study exposed to the void over the lounge and the master bedroom with ensuite and private balcony.

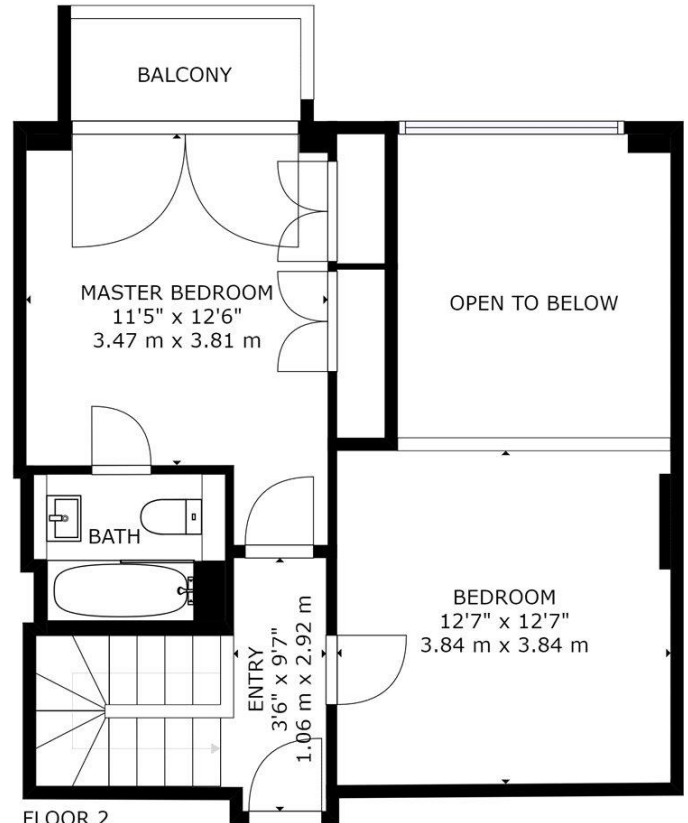
The flat further benefits from a 24-hour on site concierge and is offered chain free. City Pavilion is close to excellent amenities such as the restaurants of Cowcross Street and St John Street whilst the delights of the West End and nightlife of Shoreditch are easily accessible. Farringdon Station is located 0.1 mile away offering access to the Metropolitan, Circle, Hammersmith and City lines in addition to national rail services.

- 2 Double Bedrooms
- 24 Hour Concierge
- Close to Farringdon Station
- Private Balcony





FLOOR 1



FLOOR 2

GROSS INTERNAL AREA
 TOTAL: 1073 sq ft, 100 m²
 SIZES AND DIMENSIONS ARE APPROXIMATE, ACTUAL MAY VARY.



Viewing arrangement by appointment 0203 911 3662

ec1@stirlingackroyd.com
106 St John Street, EC1M 4EH

stirlingackroyd.com

STIRLING ACKROYD_STI019_CLK190095_DTL004_10

