



Panton Street, London, SW1Y 4DL
£650,000





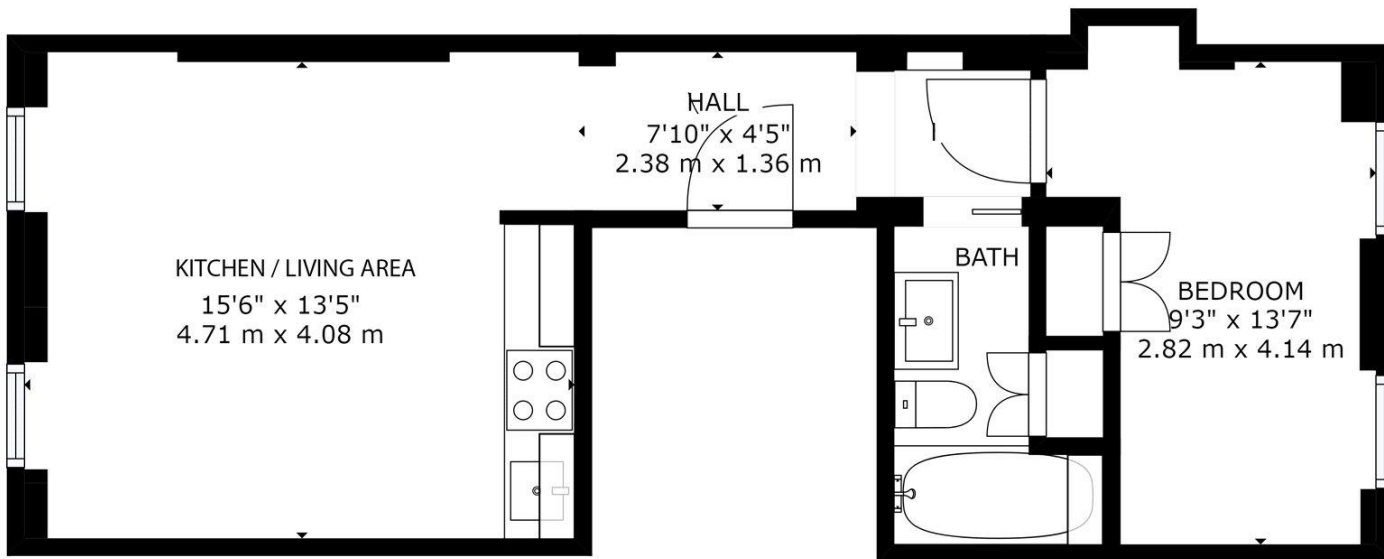
Located on the first floor of this Grade II listed period conversion, is a bright and charming one-bedroom apartment.

Perfectly situated to access the endless bars, restaurants, theatres, shops, and delights the West End has to offer with Trafalgar Square and Leister Square only 0.2 of a mile away whilst Piccadilly Circus is only a 160 metre walk. The flat would make an ideal pied-a-terre or investment appealing to both professionals and students with LSE, UCL nearby.

The flat comprises a modern open-plan reception/kitchen boasting high ceilings and characterful wood flooring, bathroom, and generously proportioned quiet bedroom at the back with built in storage.

- Period Conversion
- Wood Flooring
- High Ceilings
- Fantastic Location
- 0.1 Miles to Picadilly Circus
- 0.2 Miles from Trafalgar Square
- 0.2 Miles from Leicester Square





GROSS INTERNAL AREA
TOTAL: 439 sq ft, 41 m²
SIZES AND DIMENSIONS ARE APPROXIMATE, ACTUAL MAY VARY.



Viewing arrangement by appointment 0203 911 3662

ec1@stirlingackroyd.com
106 St John Street, EC1M 4EH

stirlingackroyd.com

STIRLING ACKROYD_STI019_CLK190096_DTL004_10

