



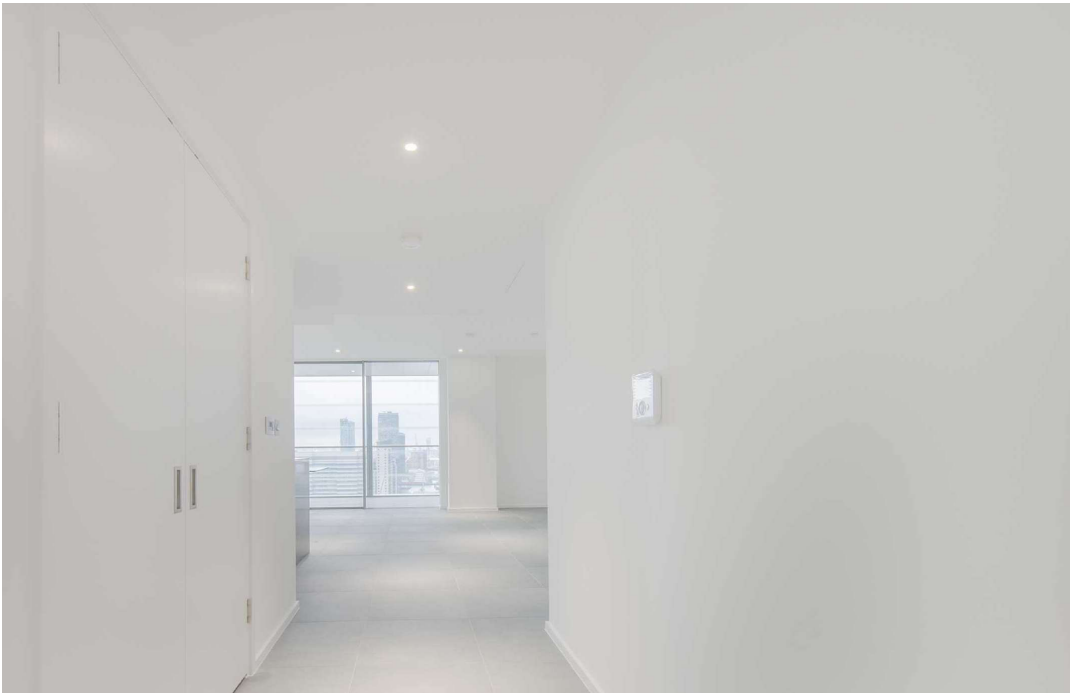
21<sup>st</sup> Floor, Dollar Bay Point, 3 Dollar Bay Place, E14 9AD  
**£3,250 per month**





A stunning two bedroom plus study apartment and a long winter garden on the twenty first floor of this superb development, Dollar Bay.

- 2 Bedrooms
- Flat
- Part Furnished
- 





**APARTMENT 2104**

**INTERNAL AREA**

1121 sq ft, 104.2 sq m

**WINTER GARDEN AREA**

262 sq ft, 24.4 sq m

**TOTAL AREA including W/G**

1384 sq ft, 128.6 sq m

**LIVING/DINING/  
KITCHEN**

6045mm x 6030mm  
19' 10" x 19' 9"

**MASTER BEDROOM**

4187mm x 3760mm  
13' 9" x 12' 4"

**BEDROOM 2**

3390mm x 3093mm  
11' 1" x 10' 2"

**BEDROOM 3/STUDY**

4634mm x 2205mm  
15' 2" x 7' 3"

**WINTER GARDEN**

12589mm x 1937mm  
41' 4" x 6' 4"



Viewing arrangement by appointment 0203 961 7791

[canarywharflettings@stirlingackroyd.com](mailto:canarywharflettings@stirlingackroyd.com)

96 Three Colt Street, Limehouse, London, E14 8AP

STIRLING ACKROYD\_STI032\_NBC161737\_DTL001\_10

