



High Holborn, London, WC1V 6LS

£2,750,000

EPC **C**





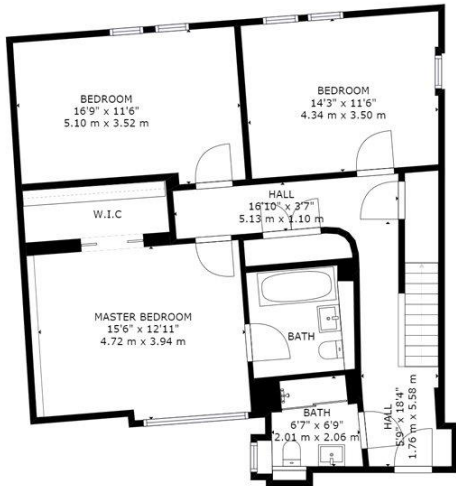
Perched at the top of an attractive building with a period façade this simply stunning triplex penthouse apartment is a mere 160 metres from Holborn Underground Station.

The property comprises two spacious bedrooms and a family bathroom along with a sizeable master bedroom which boasts a walk-in wardrobe and en-suite bathroom. The beautiful wood flooring, attention to detail and finish continues throughout the apartment, which hosts an impressive open-plan living space. The modern kitchen is separated from the dining space by a practical and stylish island. The spacious lounge is ideal for entertaining with its bright aspect from the floor to ceiling windows. The entertaining space continues onto the sixth floor with the sizable sun trap of a roof terrace making this space perfect for socialising and barbecues.

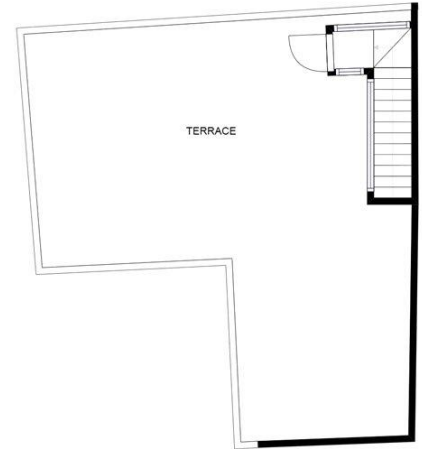
The building benefits from lift access, CCTV security surveillance and bicycle storage. Nearest transport options include Chancery Lane and Holborn Underground Stations offering access to the Central and Piccadilly Lines whilst the endless delights of Covent Garden, Oxford Street and Soho are only a short walk away.

- Long Lease, Lift Access
- Large Roof Terrace
- 1845 Square Feet
- Three Bedrooms and Two Bathrooms
- Bike Storage and CCTV Surveillance





4TH



GROSS INTERNAL AREA
 TOTAL: 1845 sq ft, 171 m²
 SIZES AND DIMENSIONS ARE APPROXIMATE, ACTUAL MAY VARY.



Viewing arrangement by appointment 0203 911 3663

wc1@stirlingackroyd.com
19 Bury Place, WC1A 2JB

stirlingackroyd.com

STIRLING ACKROYD_STI027_SHO161211_DTL004_10

