



Canaletto Tower, 257 City Road, EC1V 1AD
£1,000,000

EPC **B**





Designed by Dutch architect firm UNStudio, Canaletto is a 31-storey luxury residential tower prominently situated on City Road between Islington and Shoreditch.

This stunning two double bedroom 910 square feet (approx) apartment is finished to a superb specification throughout including oak veneer doors, engineered wide board timber flooring and modern, neutral décor. Intelligent fixtures are also incorporated with Tech City prepared touches such as a prewired home automation system, cat 6 cabling, ceiling speakers and fibre optic internet connectivity.

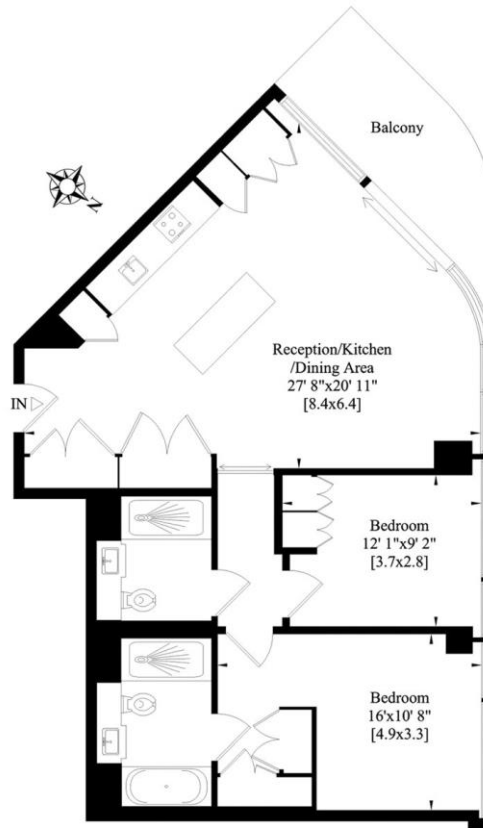
Accessed via one of three high-speed lifts, the Canaletto also benefits from video entry, 24 hour security and CCTV system.

City Road is conveniently located between four well-established local districts Clerkenwell, Shoreditch, Islington and the City. With numerous area hotspots only a short walk away from popular restaurants to boutique bars and renowned fashion houses to local popup amenities, Canaletto is in a prime position.

Leasehold. 999 year lease from 2010.

- Two Bedrooms, Two Bathrooms, 910 Square Feet
- Terrace, South West Facing
- Leisure and Spa Facilities
- Private Cinema, 24 Hour Concierge





TOTAL APPROX. INTERNAL AREA 910 SQ FT / 84 SQ M

Whilst every attempt has been made to ensure the accuracy of the floor plan contained here, measurements of doors, windows, rooms and any other items are approximate and no responsibility is taken for any error, omission, or mis-statement. This plan is for illustrative purposes only and should be used as such by any prospective purchaser. The services, systems and appliances shown have not been tested and no guarantee as to their operability or efficiency can be given.



Viewing arrangement by appointment 0203 911 3662

ec1@stirlingackroyd.com
106 St John Street, EC1M 4EH

stirlingackroyd.com

STIRLING ACKROYD_STI019_SHO170442_DTL004_10

