



Trinity Court, 254 Gray's Inn Road, WC1X 8JZ

£425,000

EPC **E**





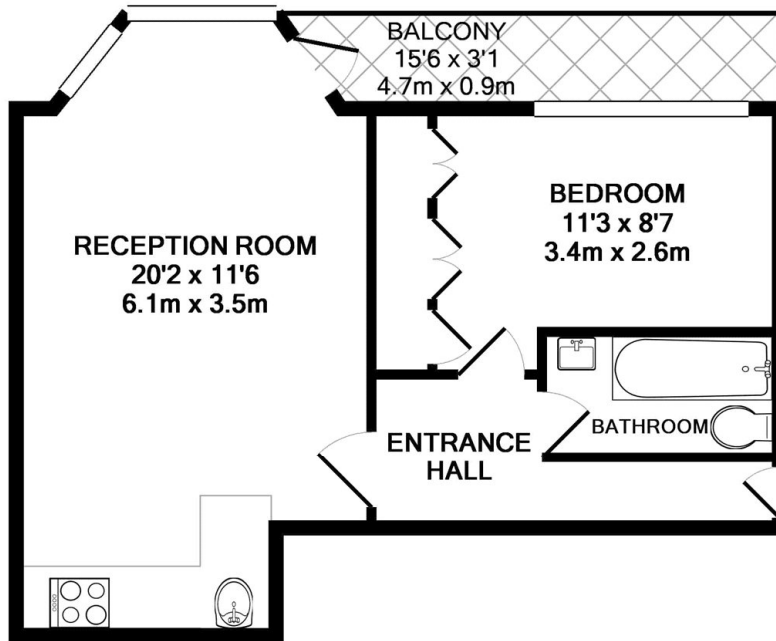
A beautifully renovated one-bedroom apartment set on the fourth floor of a popular Art Deco building in Bloomsbury.

Renovated to a high standard throughout the flat features a bright and spacious open plan reception/kitchen room, a good-sized bedroom with built in storage, modern bathroom and a balcony. Furnished to a high standard and with wooden flooring throughout, the flat also features a lift and a video entry system.

Enviably located just a short walk away from both Kings Cross and Russell Square Stations as well as all the shops and amenities of the nearby Brunswick Centre.

Offered chain free this property would make an ideal pied-a-terre, investment, or first step onto the property ladder.





TOTAL APPROX. FLOOR AREA 386 SQ.FT. (35.9 SQ.M.)

Whilst every attempt has been made to ensure the accuracy of the floor plan contained here, measurements of doors, windows, rooms and any other items are approximate and no responsibility is taken for any error, omission, or mis-statement. This plan is for illustrative purposes only and should be used as such by any prospective purchaser. The services, systems and appliances shown have not been tested and no guarantee as to their operability or efficiency can be given

Made with Metropix ©2015





Viewing arrangement by appointment 0203 911 3662

ec1@stirlingackroyd.com

106 St John Street, EC1M 4EH

stirlingackroyd.com

STIRLING ACKROYD_STI019_SHO200149_DTL004_10

