



Dickinson Court, 15 Brewhouse Yard, EC1V 4JX
£775,000





Set within this luxury development is this spacious one-bedroom apartment.

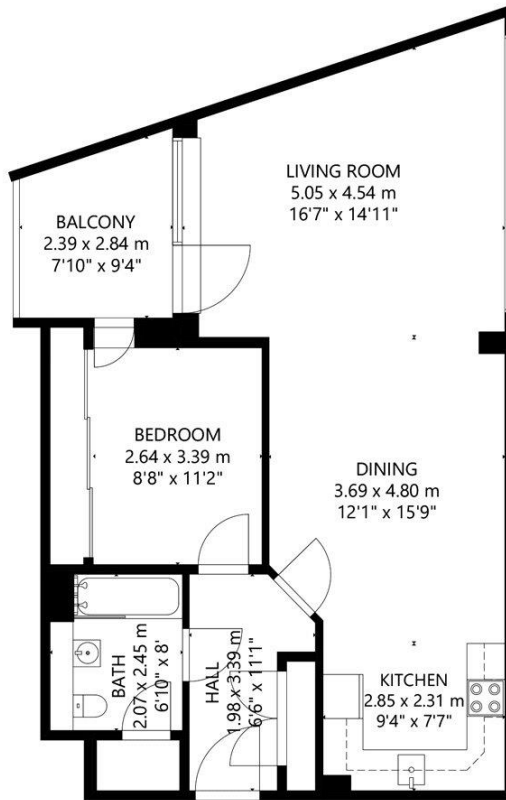
The flat comprises an expansive dual aspect open-plan lounge/kitchen diner boasting floor to ceiling windows, wood flooring, and a private balcony easily accommodating a table and chairs. The generously proportioned bedroom contains a built-in wardrobe and direct access out to the balcony. The entrance hallway houses a large storage closet and access to a modern bathroom with further storage.

Brewhouse Yard is one of Clerkenwell's premier developments providing residents with a 24-hour concierge, lift access, secure entry-phone system, and a mere 0.4 mile journey to Farringdon Station offering access to the Circle, Metropolitan and Hammersmith & City lines and Thameslink services accessing Luton & Gatwick airport. The highly anticipated Elizabeth line will provide speedy access to Heathrow Airport.

Clerkenwell offers a range of top-notch restaurants, bars, and cafes whilst Exmouth and Smithfield's Market are only a short walk away.

- Private Balcony and Lift Access
- Wooden Floors and Floor to Ceiling Windows
- 24 Hour Concierge and Video Entry System
- 0.4 Miles to Farringdon Tube





GROSS INTERNAL AREA
TOTAL: 767 sq ft/ 71 m²
SIZE AND DIMENSIONS ARE APPROXIMATE, ACTUAL MAY VARY.



Viewing arrangement by appointment 0203 911 3662

ec1@stirlingackroyd.com
106 St John Street, EC1M 4EH

stirlingackroyd.com

STIRLING ACKROYD_STI019_XXX040174_DTL004_10

