



Rowland Hill House, Nelson Square, SE1 0LU
£500,000





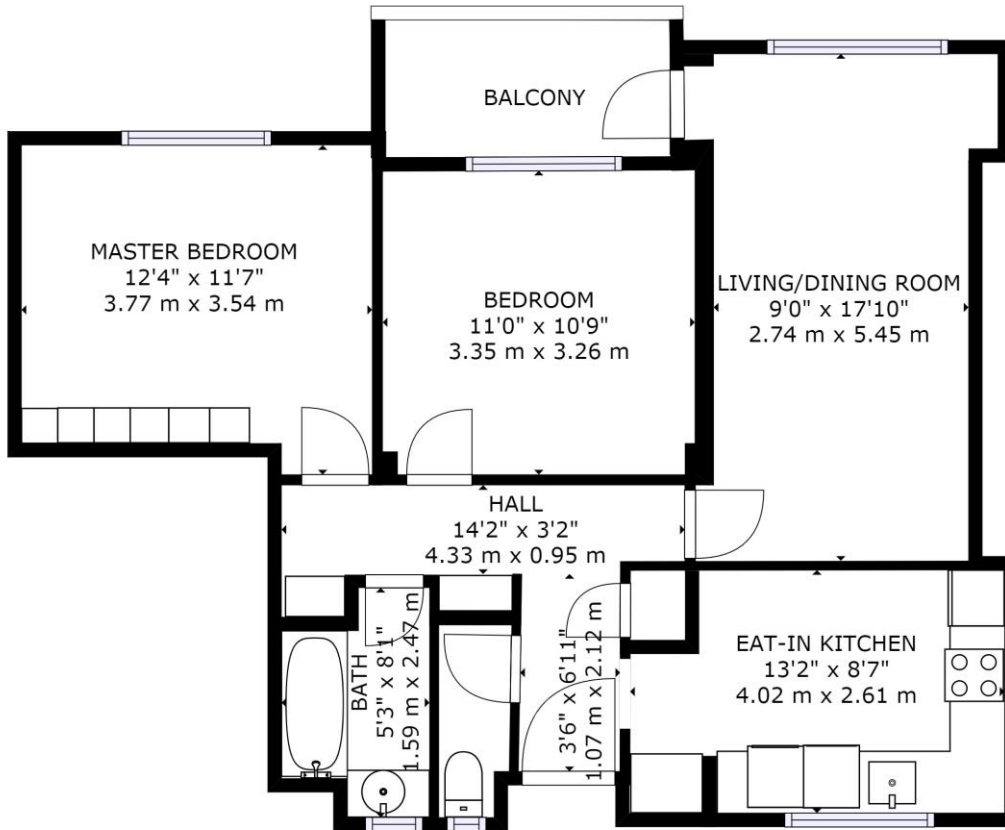
A bright two bedroom flat situated on the quiet side of Rowland Hill House, overlooking Nelson Square gardens, with large windows and green views.

Set on the sixth floor of this well maintained ex-local authority block the property is located next door (0.1 miles) to Southwark Jubilee Station.

The property is in excellent condition throughout with an 'eat in' kitchen, south facing balcony off the reception and separate WC.

- 2 Bedrooms
- Flat
- Leasehold
- Balcony





GROSS INTERNAL AREA
TOTAL: 784 sq ft, 72 m²
SIZES AND DIMENSIONS ARE APPROXIMATE, ACTUAL MAY VARY.



Viewing arrangement by appointment 0203 911 3661

se1@stirlingackroyd.com

56 Borough High Street, SE1 1XF

stirlingackroyd.com

STIRLING ACKROYD_STI015_XXX080453_DTL004_10

