



1 Holly Tree House

61 Victoria Road, St. Peter Port, GY1 1JB

🛏 x1 🚿 x1 PERRYS TOWN G8 TRP 86

- Beautifully appointed one bed apartment
- Set over two floors
- Top quality finish throughout
- Own low maintenance patio
- Available 15th July 2021
- Rent £1,600 per month
- Deposit £1,600
- £25 per month service charge

£1,600pm

RENTAL - LOCAL MARKET

swoffers



rentals@swoffers.co.uk | 01481 721757

Estate House, Ann's Place, St Peter Port, Guernsey, Channel Islands, GY1 2NU





About 1 Holly Tree House

Stunning one bedroom duplex apartment in a popular residential location near the centre of St Peter Port. This beautiful property has been refurbished to the highest standard over two floors including wooden flooring, a four piece tiled bathroom with TV over the bath and a low maintenance patio. A garaged parking space is available by separate negotiation. Available 15th of July for a minimum of one year.



ACCOMMODATION COMPRISING

Communal Hallway

8'1" x 3'9" (2.46m x 1.14m)

Shared with just one other apartment.

GROUND FLOOR

Living Room

13'7" x 9'11" (4.14m x 3.02m)

Kitchen Area

11' x 11' max (3.35m x 3.35m max)

LOWER GROUND FLOOR

Half Landing

Dressing Room

11'11" x 9'10" max (3.63m x 3m max)

Bedroom

13'2" x 11' max (4.01m x 3.35m max)

Bathroom

9'9" x 5'6" (2.97m x 1.68m)

Appliances

Integrated appliances include fridge, freezer, electric single oven, four ring electric hob with extractor fan over, dishwasher, washing machine and tumble dryer.

Outside

Small private patio with power and light. A garaged parking space is available for £150 per month.

Term

One year minimum.

Services

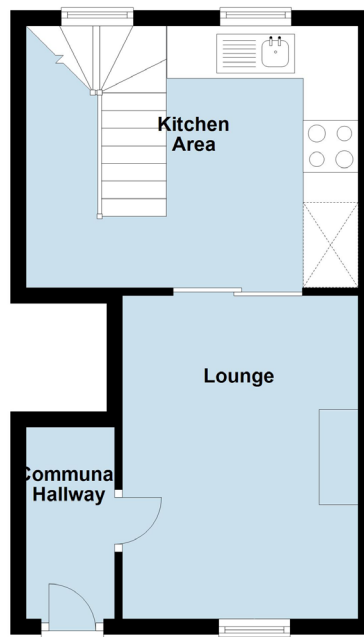
Mains electricity and water. Mains drainage. Gas fired central heating.

Available
15th July 2021.

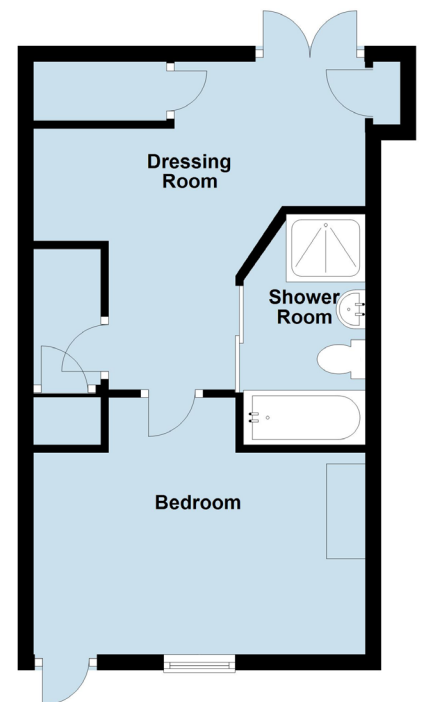
Rent
£1,600 per month plus £25 per month service charge.

Deposit
£1,600.

Ground Floor



Lower Ground Floor



swoffers



rentals@swoffers.co.uk | 01481 721757

Estate House, Ann's Place, St Peter Port, Guernsey, Channel Islands, GY1 2NU

These particulars, whilst believed to be accurate are set out as a general outline only for guidance and do not constitute any part of an offer or contract. Sketch plans for illustrative purposes only. All measurements, walls, doors, windows, fittings and appliances, their sizes and locations are shown conventionally and are approximate only and cannot be regarded as being a representation either by the Vendor or their Agent, Swoffers Limited. Intending purchasers should not rely on them as statements or representations of fact or that the property or its services or any systems or equipment are in good condition, but must satisfy themselves by inspection or otherwise as to their accuracy and operative condition. Any reference to alterations to, or use of, any part of the property is not a statement that any necessary planning, building regulations or other consent has been obtained. These matters must be verified by any intending purchaser. No person in this firm's employment has the authority to make or give any representation or warranty in respect of the property.