



## Arlington Gardens Chiswick, W4



£1,550 per month



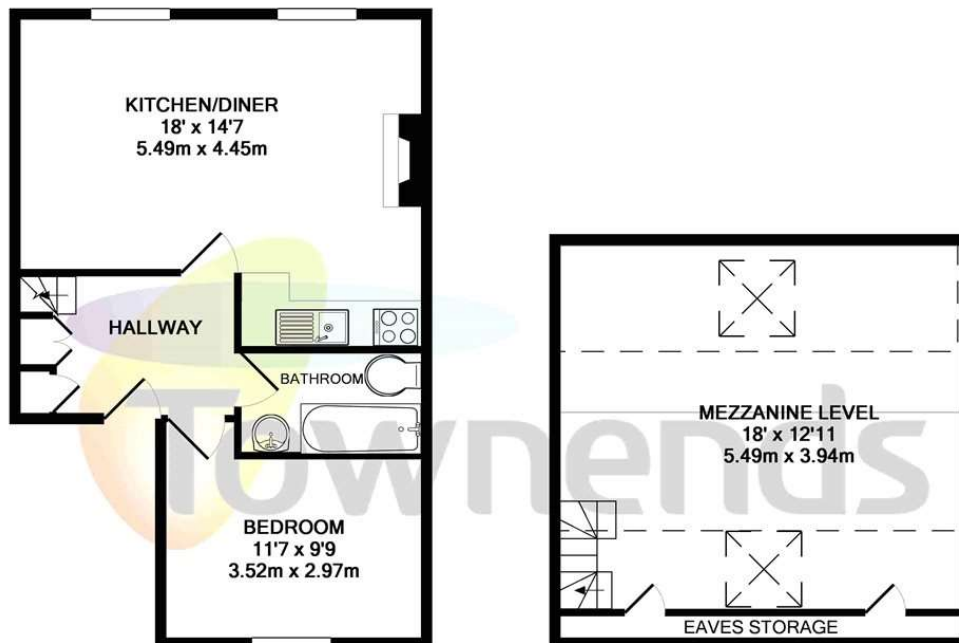
Unique One Bedroom property with separate reception room/ study room, ideal for those working from home! Offered over two floors and situated in one of Chiswick's most popular roads is this large (over 600 sq ft), bright & spacious one bedroom apartment. This property has two reception rooms, good size double bedroom, bathroom and kitchen. Early viewing is highly recommended.

Arlington Gardens is a quiet residential road offering quick access to the extensive range of popular shops, bars, boutiques and restaurants in and around Chiswick High Road. For the motorist, the A4/M4 provides a rapid route out of London towards Heathrow

1 Bedrooms

Flat/Apartment

Furnished, Part Furnished



GROUND FLOOR  
APPROX. FLOOR  
AREA 426 SQ.FT.  
(39.6 SQ.M.)

1ST FLOOR  
APPROX. FLOOR  
AREA 187 SQ.FT.  
(17.4 SQ.M.)

TOTAL APPROX. FLOOR AREA 613 SQ.FT. (57.0 SQ.M.)

Made with Metropix ©2017

Viewing arrangement by appointment 02039670016

[chiswicklettings@townends.co.uk](mailto:chiswicklettings@townends.co.uk)

440 Chiswick High Road, Chiswick, London, W4 5TT

**townends.co.uk**