



Wilkinson Way, London, W4 5XB

£725,000





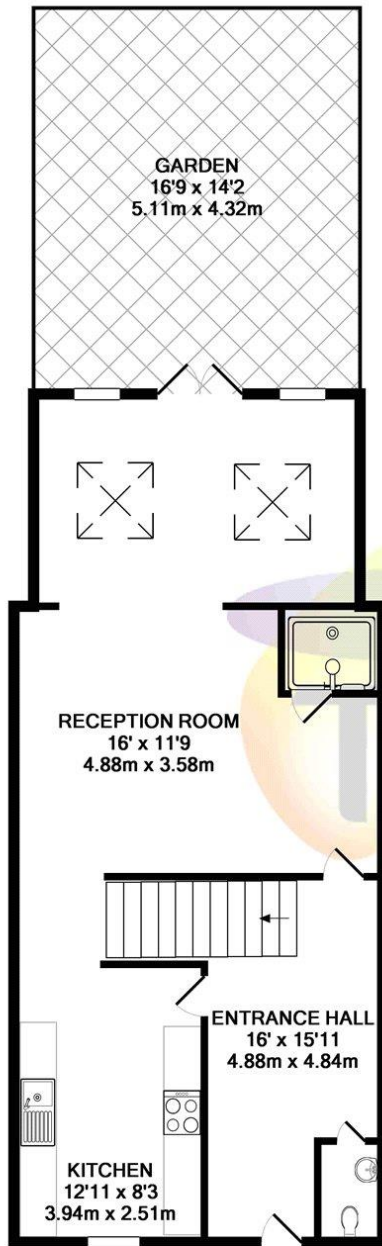
Viewing tours are now available on this property - please contact Townends for the link to the tour.

Located on the borders of Bedford Park, a spacious four / five bedroom townhouse located in a cul-de-sac in Chiswick. This property is arranged over three floors and comprises a spacious double reception room, fully fitted kitchen, four generous double bedrooms, three bathrooms and a separate WC. This property also benefits from having a private patio garden and a driveway.

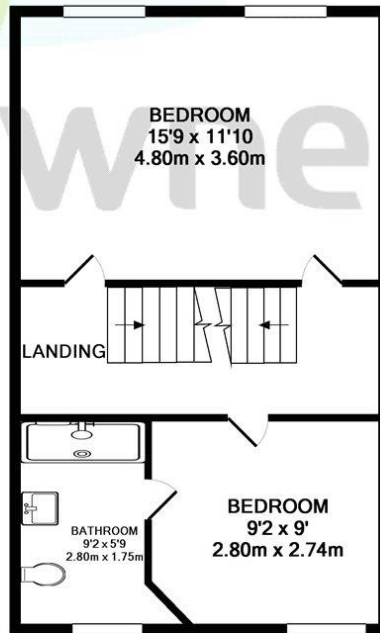
Wilkinson Way is within walking distance to Acton High Street, Chiswick Park and Chiswick High Road.



- 4 Bedrooms
- House
- Freehold
- Garden



GROUND FLOOR  
APPROX. FLOOR  
AREA 573 SQ.FT.  
(53.2 SQ.M.)



1ST FLOOR  
APPROX. FLOOR  
AREA 430 SQ.FT.  
(39.9 SQ.M.)



2ND FLOOR  
APPROX. FLOOR  
AREA 438 SQ.FT.  
(40.7 SQ.M.)

TOTAL APPROX. FLOOR AREA 1441 SQ.FT. (133.9 SQ.M.)



Viewing arrangement by appointment 02039111636

[chiswick@townends.co.uk](mailto:chiswick@townends.co.uk)

440 Chiswick High Road, Chiswick, London, W4 5TT

**[townends.co.uk](http://townends.co.uk)**

TOWNENDS\_BH003\_CHL170016\_DTL001\_5

