



Mint Walk, Croydon, CR0 1XS
£520,000

EPC B



Townends



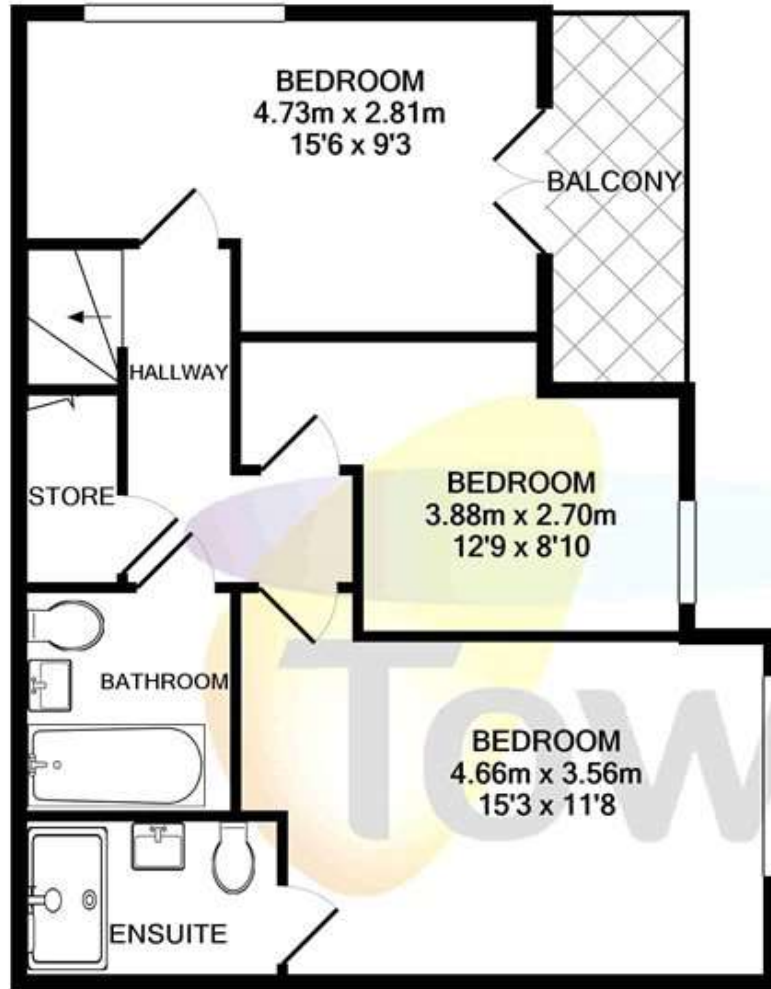
A stylish, immaculately presented three bedroom duplex apartment for sale forming part of a desirable boutique modern development located in the heart of Central Croydon conservation area with East Croydon Station a short walk away.

The light-filled accommodation offers fantastic contemporary entertaining space with a dual aspect open-plan reception room/kitchen with space for dining and integrated Bosch appliances spread across the sixth floor, WC and entrance hall. The lower floor comprises the master bedroom with en-suite shower room, further modern bathroom and two bedrooms. The property is chain free and further benefits from two private balconies, lift access and entry phone system. The development has a luxury high end specification with contemporary features and fittings.

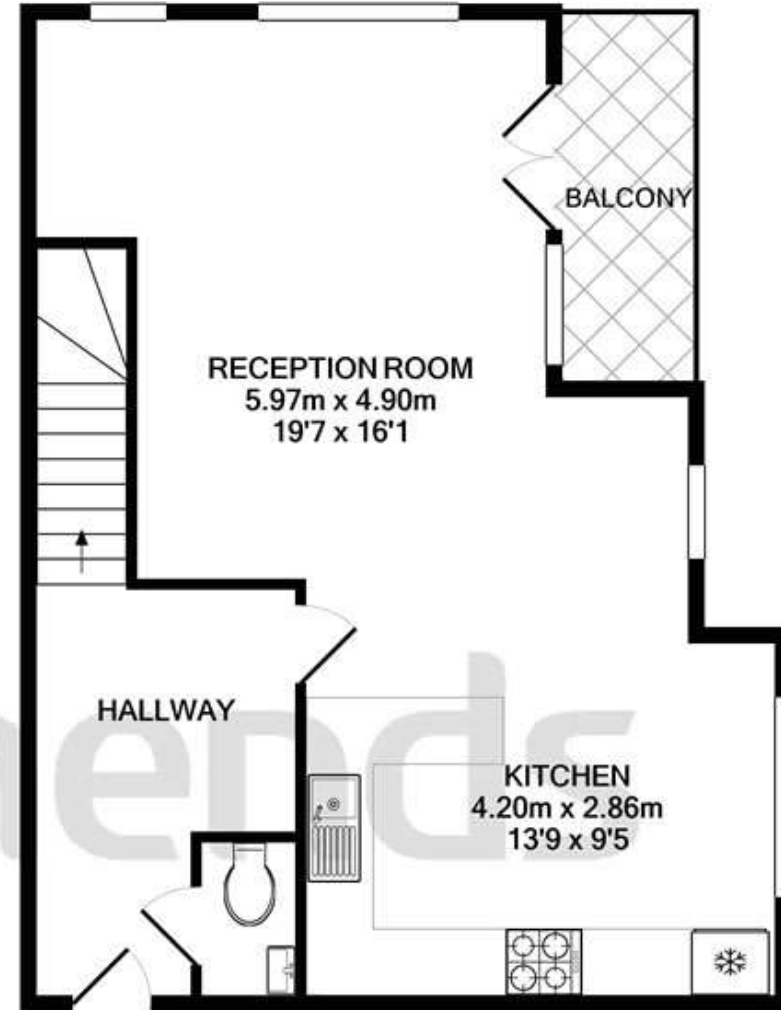
Mint Walk is well located for access to East Croydon Station with Box Park and its array of restaurants and bars nearby. The amenities of Central and South Croydon are also within walking distance.

- 3 Bedrooms
- Flat/Apartment
- Leasehold
- Balcony





5TH FLOOR



6TH FLOOR

TOTAL APPROX. FLOOR AREA 105.0 SQ.M. (1130 SQ.FT.)

Whilst every attempt has been made to ensure the accuracy of the floor plan contained here, measurements of doors, windows, rooms and any other items are approximate and no responsibility is taken for any error, omission, or mis-statement. This plan is for illustrative purposes only and should be used as such by any prospective purchaser. The services, systems and appliances shown have not been tested and no guarantee as to their operability or efficiency can be given

Made with Metropix ©2021



Viewing arrangement by appointment 02039111646

croydon@townends.co.uk

3 George Street, Croydon, CR0 1LA

townends.co.uk

TOWNENDS_BH004_CRO210101_DTL001_5

