



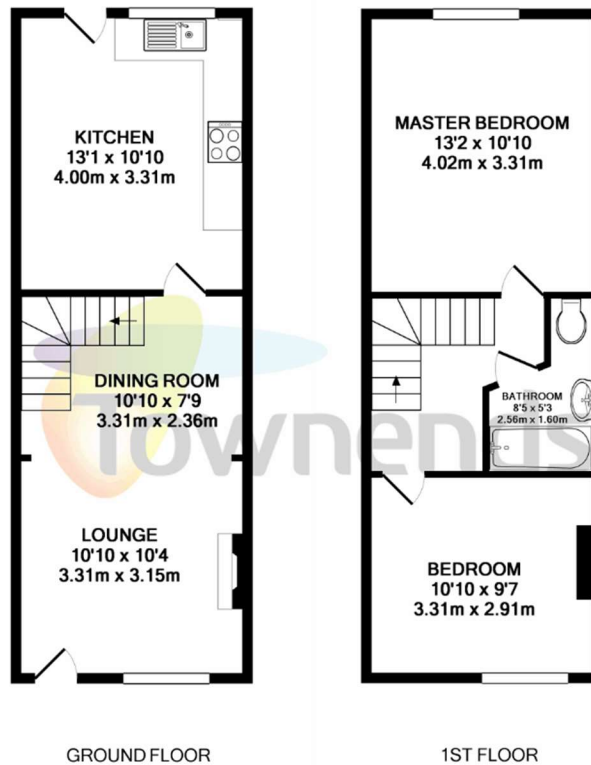
Harvest Road
Englefield Green, TW20
£1,450 per month



STUDENT PROPERTY

This immaculate and well-proportioned two double bedroom Victorian mid-terrace house located on a popular road in the heart of the village and within very close proximity of local amenities, pubs and Royal Holloway University.

The accommodation is presented to a good standard, combining modern fixtures with character features. The property comprises a good-sized lounge with open fire and wooden flooring, a modern fitted kitchen with ample room for a dining table and chairs, two large and bright double bedrooms and a modern tiled bathroom with sink. The property benefits from a lovely sunny rear garden with decking leading down to a lawn area.



Made with Metropix ©2016

Viewing arrangement by appointment 01784773319

eghamlettings@townends.co.uk

179 High Street, Egham, Surrey, TW20 9EJ

townends.co.uk