



Cranston Court, 56 Bloemfontein Road, W12 7FE
£625,000





A fabulous and spacious two-bedroom apartment, presented to the market in great condition, which has recently had a new very high specification kitchen fitted.

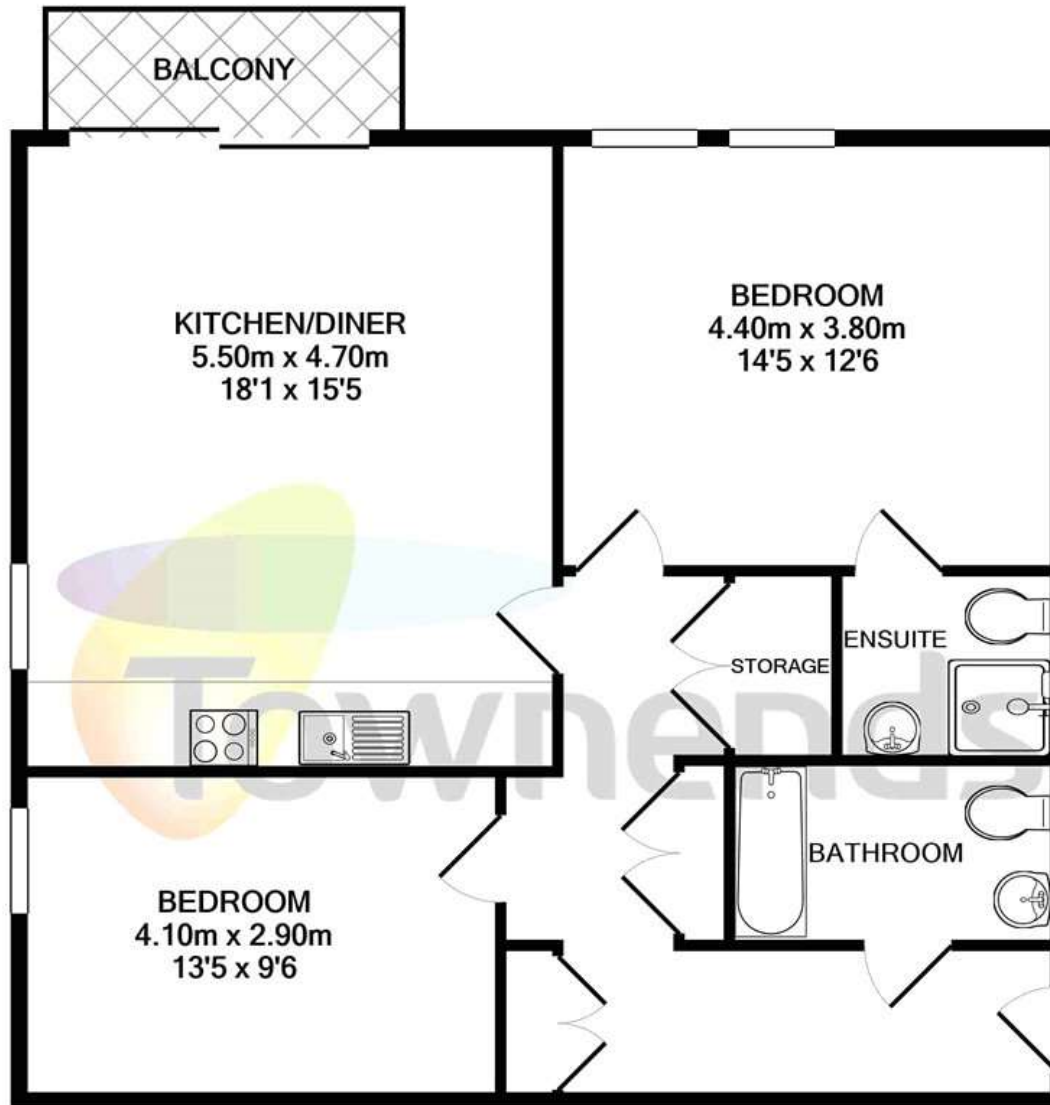
The accommodation comprises a light, bright and spacious open plan kitchen/reception with floor to ceiling windows flooding in lots of natural daylight and providing access to a private balcony, a master bedroom, again with plenty of natural daylight, with the added benefit of en-suite shower room. A further double bedroom, family bathroom and plenty of storage cupboards complete this impressive apartment.

The property further benefits from a long lease and an allocated parking space fitted with an electric charging point.

Bloemfontein Road has great transport links into Central London via the A40 and public transport. Cranston Court is ideally located within walking distance of a good selection of local amenities, and a short walk from the Uxbridge Road and Westfield shopping centre. Neighbouring town Chiswick is close by, offering a great selection of restaurants to suit all tastes, along with the ever-popular Soho House, both the west London venue High Road House, and the at the BBC Television Centre.



- 2 Bedrooms
- Flat/Apartment
- Leasehold
- Balcony



TOTAL APPROX. FLOOR AREA 76.6 SQ.M. (825 SQ.FT.)

Whilst every attempt has been made to ensure the accuracy of the floor plan contained here, measurements of doors, windows, rooms and any other items are approximate and no responsibility is taken for any error, omission, or mis-statement. This plan is for illustrative purposes only and should be used as such by any prospective purchaser. The services, systems and appliances shown have not been tested and no guarantee as to their operability or efficiency can be given

Made with Metropix ©2021



Viewing arrangement by appointment 02039111636

chiswick@townends.co.uk

440 Chiswick High Road, Chiswick, London, W4 5TT

townends.co.uk

TOWNENDS_BH003_GER203674_DTL001_5

