

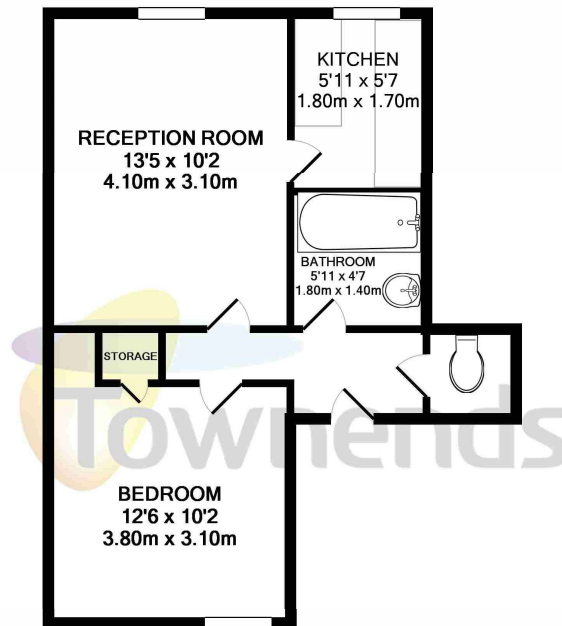


**Clyde Road
Croydon, CR0
£875 per month**



A one bedroom conversion flat located close to East Croydon Station and the tram link. The property is situated on the top floor of this converted house and features a separate kitchen, central heating and is ideal for professionals.

- 1 Bedroom
- Flat/Apartment
- Unfurnished
- Close to Transport Links



TOTAL APPROX. FLOOR AREA 380 SQ.FT. (35.3 SQ.M.)

Whilst every attempt has been made to ensure the accuracy of the floor plan contained here, measurements of doors, windows, rooms and any other items are approximate and no responsibility is taken for any error, omission, or mis-statement. This plan is for illustrative purposes only and should be used as such by any prospective purchaser. The services, systems and appliances shown have not been tested and no guarantee as to their operability or efficiency can be given
Made with Metropix ©2019

Viewing arrangement by appointment 02039670041

croydonlettings@townends.co.uk

83-85 High Street, Croydon, Surrey, CR0 1QF

townends.co.uk