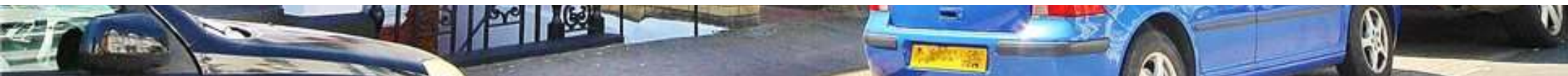




Norroy Road, Putney, SW15 1PQ  
£1,100,000





For Sale by Online Auction. Starting Bid £1,100,000.  
Terms and conditions apply.

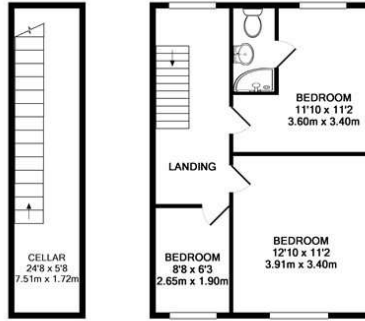
Unique opportunity to buy a fabulous, larger than average six-bedroom house in the heart of Putney. The house is larger than others in the terrace and has plenty of potential for a buyer to put their own mark on it.

All fixtures and fittings are in good order and the house has been looked after well by the current owners. The garden is south facing and barely overlooked.

Norroy Road is off Putney High Street benefitting from Putney mainline rail, vibrant shopping area and recreation nearby on the River Thames.

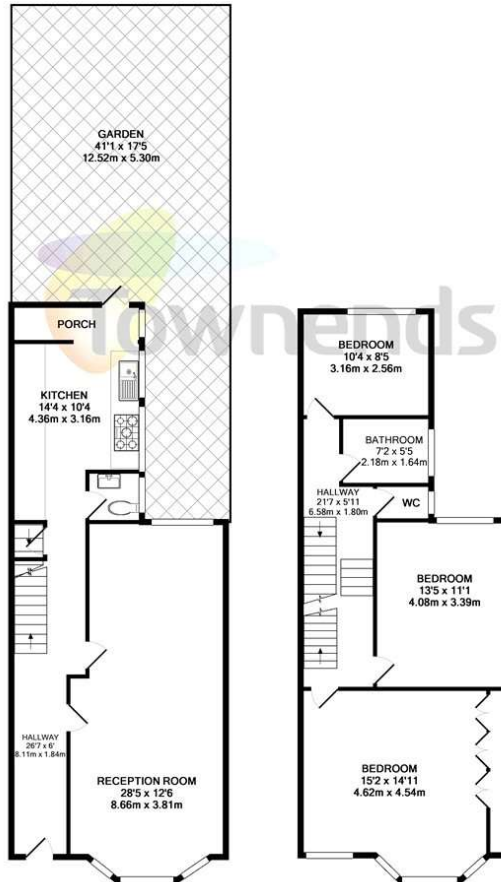
- 6 Bedrooms
- House
- Freehold
- Garden





CELLAR  
APPROX. FLOOR  
AREA 139 SQ.FT.  
(12.9 SQ.M.)

2ND FLOOR  
APPROX. FLOOR  
AREA 428 SQ.FT.  
(39.8 SQ.M.)



GROUND FLOOR  
APPROX. FLOOR  
AREA 645 SQ.FT.  
(59.9 SQ.M.)

1ST FLOOR  
APPROX. FLOOR  
AREA 639 SQ.FT.  
(59.3 SQ.M.)

TOTAL APPROX. FLOOR AREA 1851 SQ.FT. (172.0 SQ.M.)

Whilst every attempt has been made to ensure the accuracy of the floor plan contained here, measurements of doors, windows, rooms and any other items are approximate and no responsibility is taken for any error, omission, or mis-statement. This plan is for illustrative purposes only and should be used as such by any prospective purchaser. The services, systems and appliances shown have not been tested and no guarantee as to their operability or efficiency can be given.  
Made with Metropix ©2018



Viewing arrangement by appointment 02039111696

[putney@townends.co.uk](mailto:putney@townends.co.uk)

167 High Street, Putney, London, SW15 1RT

[townends.co.uk](http://townends.co.uk)

TOWNENDS\_BH014\_PUT150055\_DTL001\_5

