



Highlands Heath, Portsmouth Road, SW15 3TZ
£350,000





Measuring 650 sq. ft. this expansive one bedroom top floor flat is in need of modernisation and comprises a double bedroom, modern bathroom, large fully fitted kitchen and separate living room.

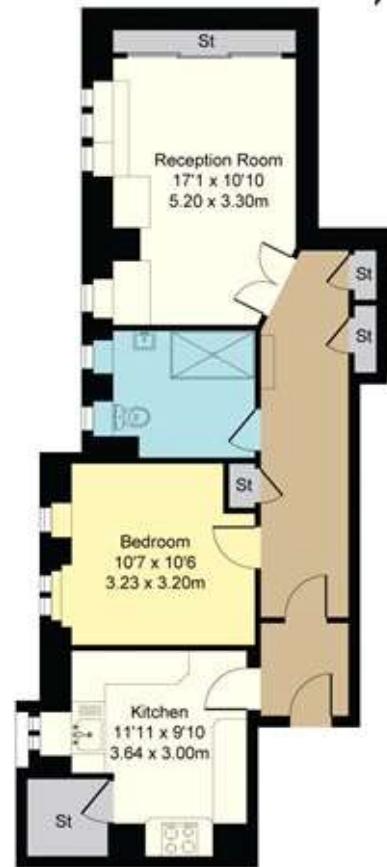
Highlands Heath is a highly sought-after 1930's development surrounded by the tranquil Putney Heath; boasting parking, access to squash and tennis courts, as well and beautifully maintained communal gardens.

All amenities and transport links in the vicinity.



- 1 Bedroom
- Flat/Apartment
- Leasehold
- Communal Gardens

Approximate Gross Internal Area
650 sq ft - 60 sq m



Third Floor



Viewing arrangement by appointment 02039111696

putney@townends.co.uk

167 High Street, Putney, London, SW15 1RT

townends.co.uk

TOWNENDS_BH014_PUT210006_DTL001_5

