



Roehampton High Street, London, SW15 4HJ

2 Beds | 2 Baths | 1 Reception Room | Asking Price £475,000 |



Roehampton High Street, London, SW15 4HJ

2 Beds | 2 Baths | 1 Reception Room |
Asking Price £475,000

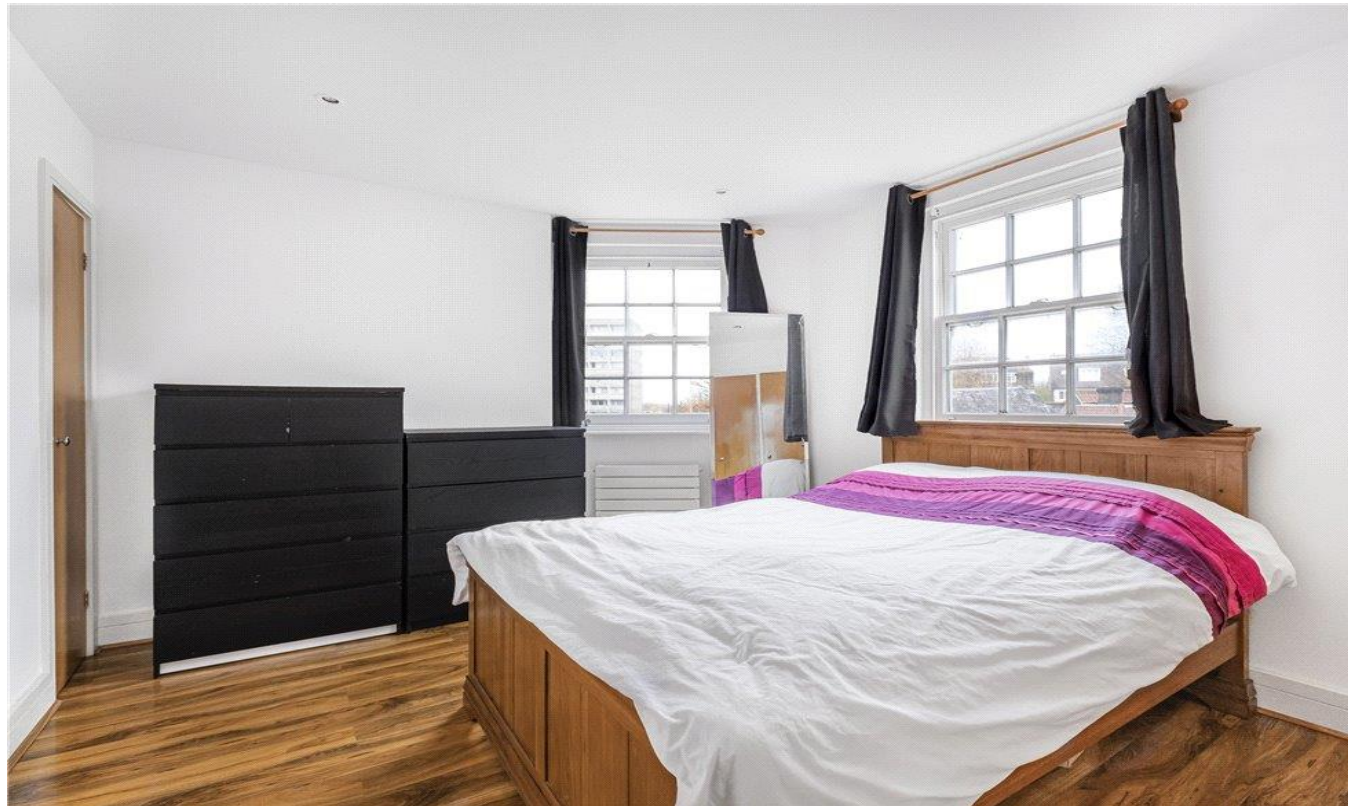
A spacious and versatile apartment with excellent views over the surrounding area and a generous roof terrace located in the heart of Roehampton.

The existing layout is perfect for investors however the property offers flexible options to re-arrange to suit the needs of the individual.

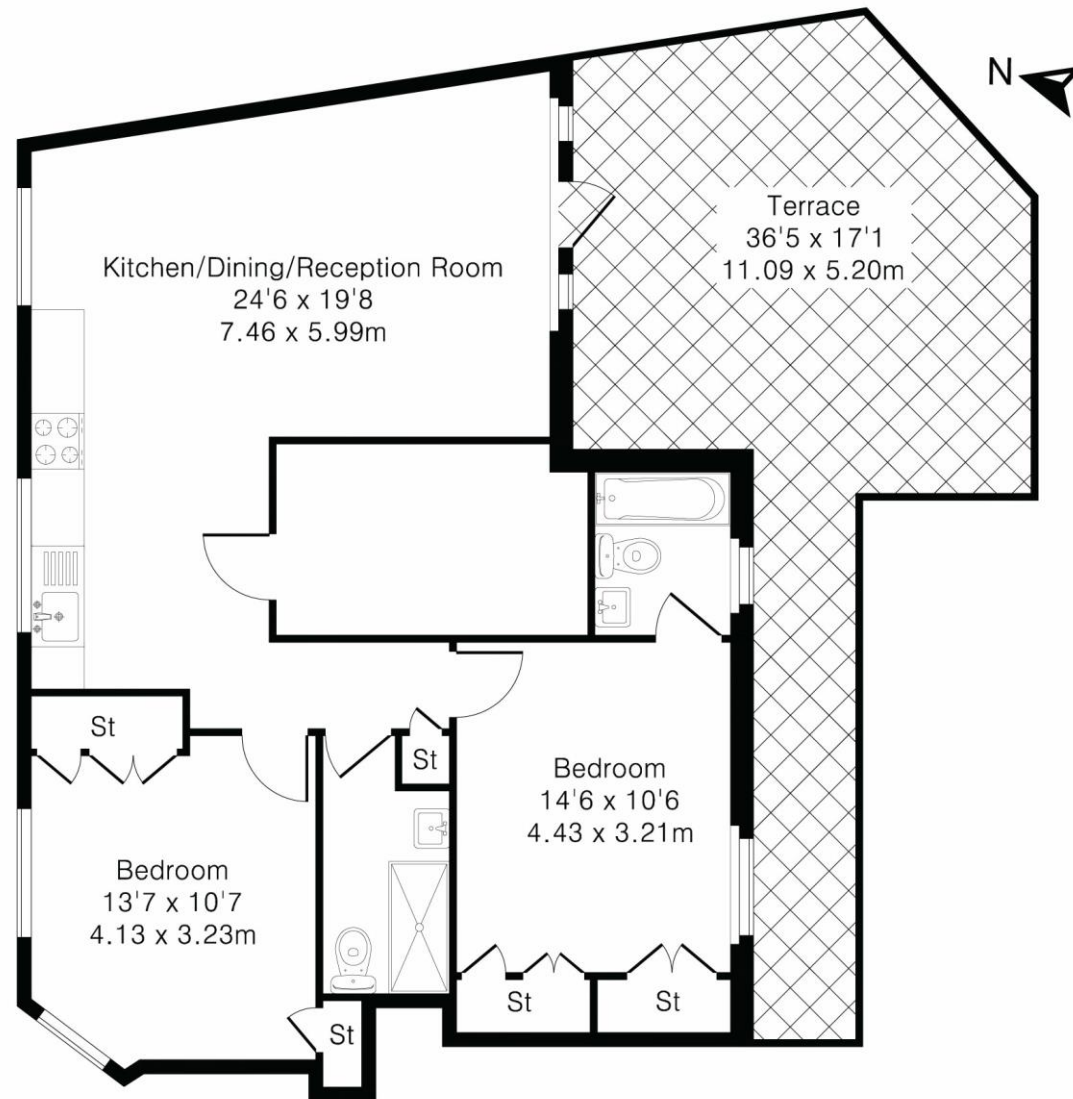
The property comprises three double bedrooms one of which benefits from an en-suite, reception room which is currently used as an additional bedroom, separate kitchen and three-piece bathroom suite. Further benefits include roof terrace and ample storage.

Roehampton High Street is amply served by extensive bus links to Putney, Kingston and Central London and the property comes complete with a long lease and no onward chain.

Roehampton High Street is amply served by extensive bus links to Putney, Kingston and Central London and the property comes complete with a long lease and no onward chain.

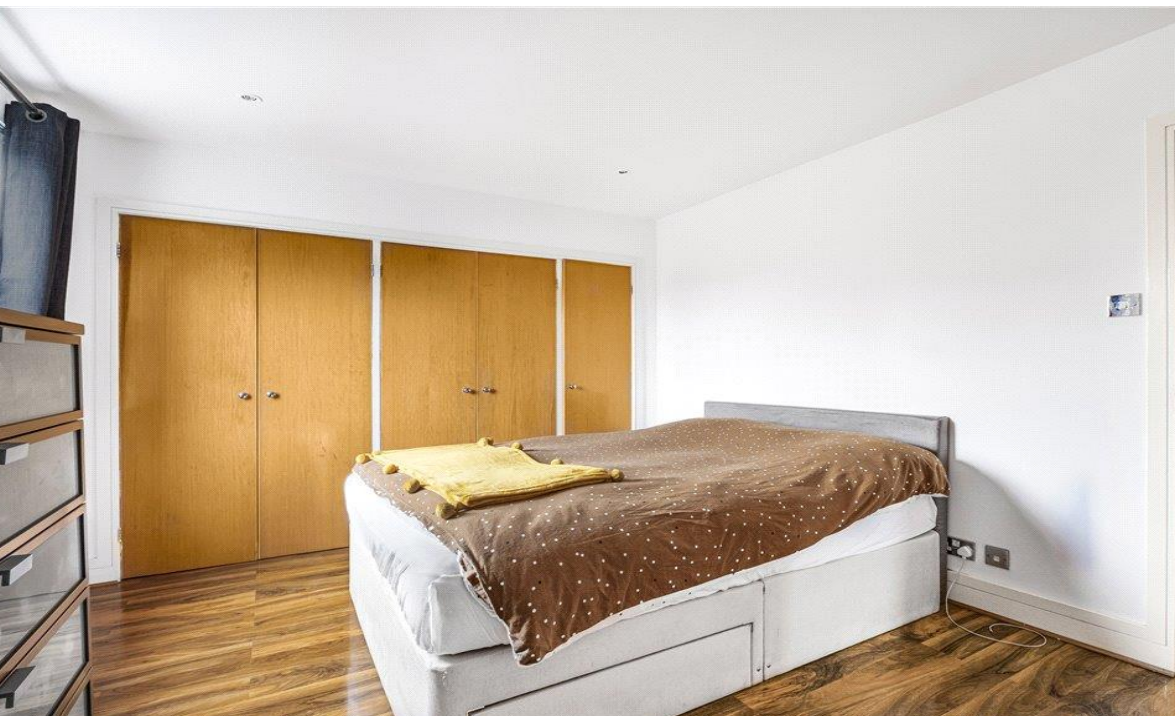


Approximate Gross Internal Area 823 sq ft – 76 sq m



Although Pink Plan Ltd ensures the highest level of accuracy, measurements of doors, windows and rooms are approximate and no responsibility is taken for error, omission or misstatement. These plans are for representation purposes only as defined by RICS code of measuring practise. No guarantee is given on total square footage of the property within this plan. The figure icon is for initial guidance only and should not be relied on as a basis of valuation.





Viewing arrangement by appointment

02039111696

putney@stirlingackroyd.com

167 High Street, Putney, London, SW15 1RT

stirlingackroyd.com

