



Putney Hill, London, SW15 3NS

£525,000





A beautifully presented and spacious three-bedroom apartment situated in an enviable location on Putney Hill set well back from the road and within easy access of the shops, bars and amenities of Putney High Street and the wide-open spaces of Putney Heath.

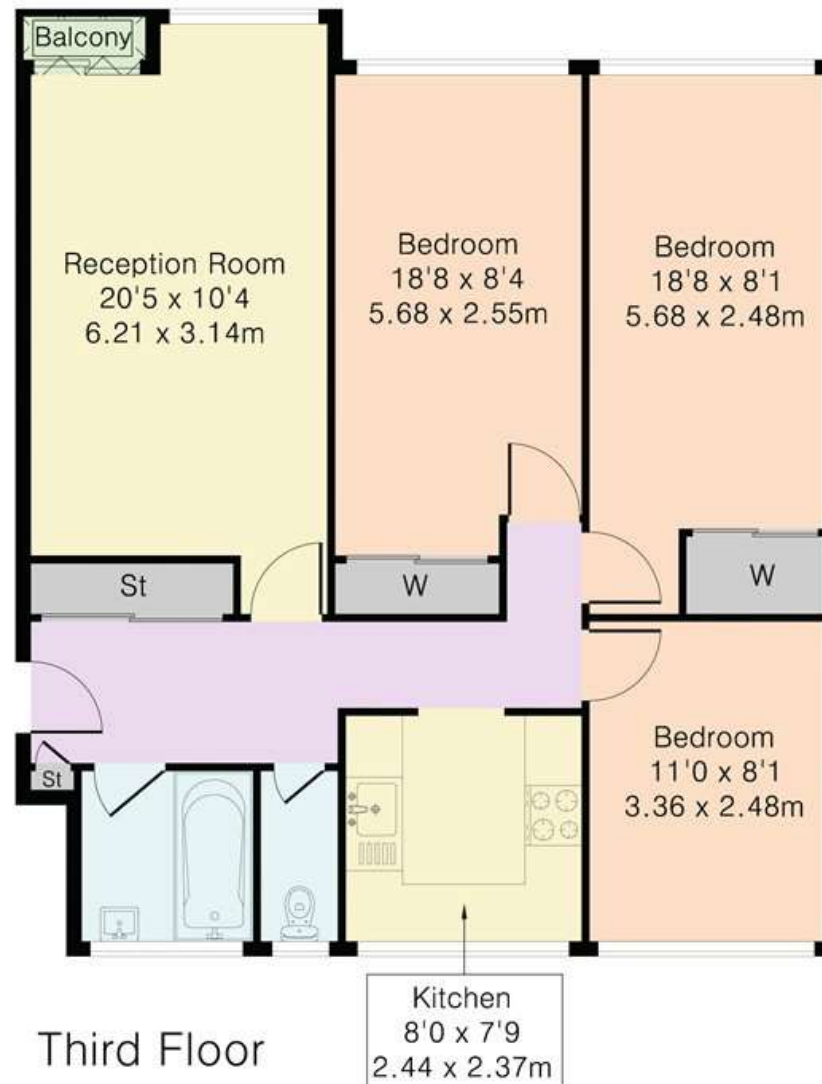
The apartment itself is offered to the market in exceptional internal condition with crisp neutral décor and parquet flooring a key feature. All of the principal rooms enjoy an abundance of natural light with wall-to-wall windows and wonderful views of the surrounding area. The separate kitchen is well laid out with excellent workspace and practical storage options whilst the three bedrooms are amply served by a family bathroom and separate WC.

Hedley Court itself is a prominent Modernist block with well-tended gardens to the rear, lift access, smart communal areas and a private garage. The listing is chain free and comes with a long lease.

- 3 Bedrooms
- Flat/Apartment
- Leasehold
- Communal Gardens, Balcony



Approximate Gross Internal Area 824 sq ft – 77 sq m



Although Pink Plan Ltd ensures the highest level of accuracy, measurements of doors, windows and rooms are approximate and no responsibility is taken for error, omission or misstatement. These plans are for representation purposes only as defined by RICS code of measuring practise. No guarantee is given on total square footage of the property within this plan. The figure icon is for initial guidance only and should not be relied on as a basis of valuation.



Viewing arrangement by appointment 02039111696

putney@townends.co.uk

167 High Street, Putney, London, SW15 1RT

townends.co.uk

TOWNENDS_BH014_PUT210065_DTL001_5

