



EGERTON GARDENS, LONDON, SW3
£795 PER WEEK FURNISHED

A RAISED GROUND FLOOR CONVERSION FLAT IN THIS MID-TERRACE QUEEN ANNE STYLE FORMER HOUSE

Knightsbridge & Chelsea | 0207 589 6616 | knightsbridge@winkworth.co.uk

Winkworth

Tenant Fees Apply: Details of fees for tenant referencing, tenancy agreement admin fees and renewal fees are available on the Winkworth website and the link can be found with the displayed rent for the property. Tenants should ensure they are fully conversant with these upfront fees and other costs that are involved at the outset of the tenancy before making an offer to rent and your local Winkworth office will provide written details upon request.

winkworth.co.uk

See things differently



DESCRIPTION:

A raised ground floor conversion flat in this mid-terrace Queen Anne style former house. Egerton Gardens is considered one of Knightsbridge's premium garden squares and is within easy walking distance of Brompton Cross and the amenities and facilities of Brompton Road.

Accommodation comprises:

- Smart communal entrance
- Entrance hall
- Reception room with direct access to communal gardens
- Kitchen with integrated appliances
- WC with utility area, Double bedroom with fitted cupboards and en-suite bathroom
- 692 Approx. Sq Ft
- EPC - D

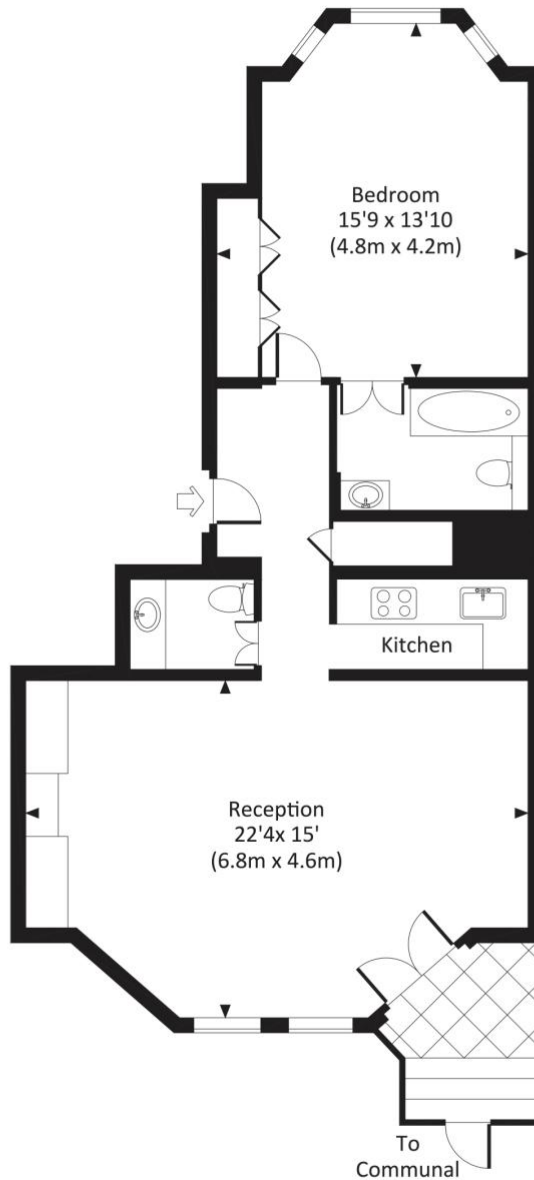
Winkworth



Winkworth

EGERTON GARDENS, SW3

Approx. gross internal area
692 Sq.Ft. / 64.3 Sq.M.

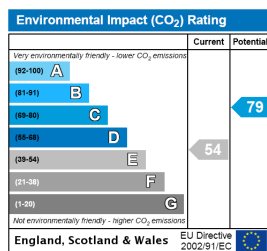
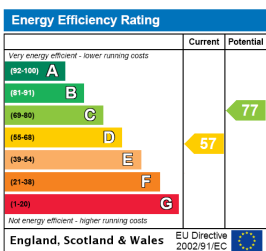


RAISED GROUND FLOOR



All measurements have been made in accordance with RICS Code of Measuring Practice which are approximate only and only for illustrative purposes. For the avoidance of doubt, Dowling Jones Design shall not be liable for any reliance on these measurements. © 2016 www.dowlingjones.com 020 7610 9933

This floorplan is for illustration purposes only and is not to scale. The position and size of doors, windows, appliances and other features are approximate.



Knightsbridge & Chelsea | 0207 589 6616 | knightsbridge@winkworth.co.uk



winkworth.co.uk

See things differently

Winkworth wishes to inform prospective buyers and tenants that these particulars are a guide and act as information only. All our details are given in good faith and believed to be correct at the time of printing but they don't form part of an offer or contract. No Winkworth employee has authority to make or give any representation or warranty in relation to this property. All fixtures and fittings, whether fitted or not are deemed removable by the vendor unless stated otherwise and room sizes are measured between internal wall surfaces, including furnishings.