



**OLAF COURT,
KENSINGTON CHURCH STREET,
LONDON, W8
£925,000 LEASEHOLD**

Two bedroom flat situated on the third floor (with lift) of a small modern block.

Winkworth



DESCRIPTION:

Two bedroom flat situated on the third floor (with lift) of a small modern block. The large west facing reception room has wood floors and overlooks Kensington Church Street. The two bedrooms are situated quietly to the rear of the building. There is also a modern kitchen and a large, contemporary shower room.

Kensington Church Street runs between Kensington High Street and Notting Hill Gate and is therefore close to many excellent local shops, restaurants and transport facilities. The green open spaces of both Kensington Gardens and Holland Park are also within easy walking distance.

ACCOMMODATION:

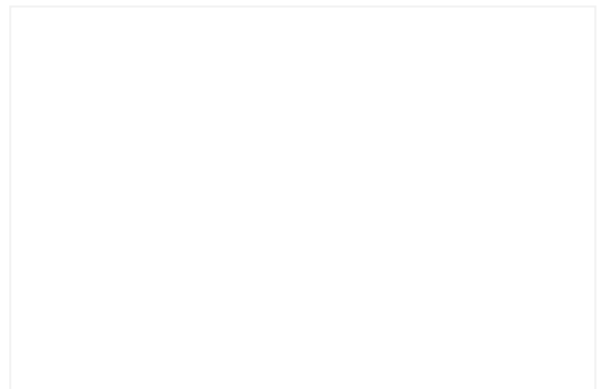
Entrance Hall | Reception Room | Kitchen | Two Double Bedrooms | Large Shower Room | Lift

LOCAL AUTHORITY:

The Royal Borough of Kensington and Chelsea.

NEAREST PUBLIC TRANSPORT:

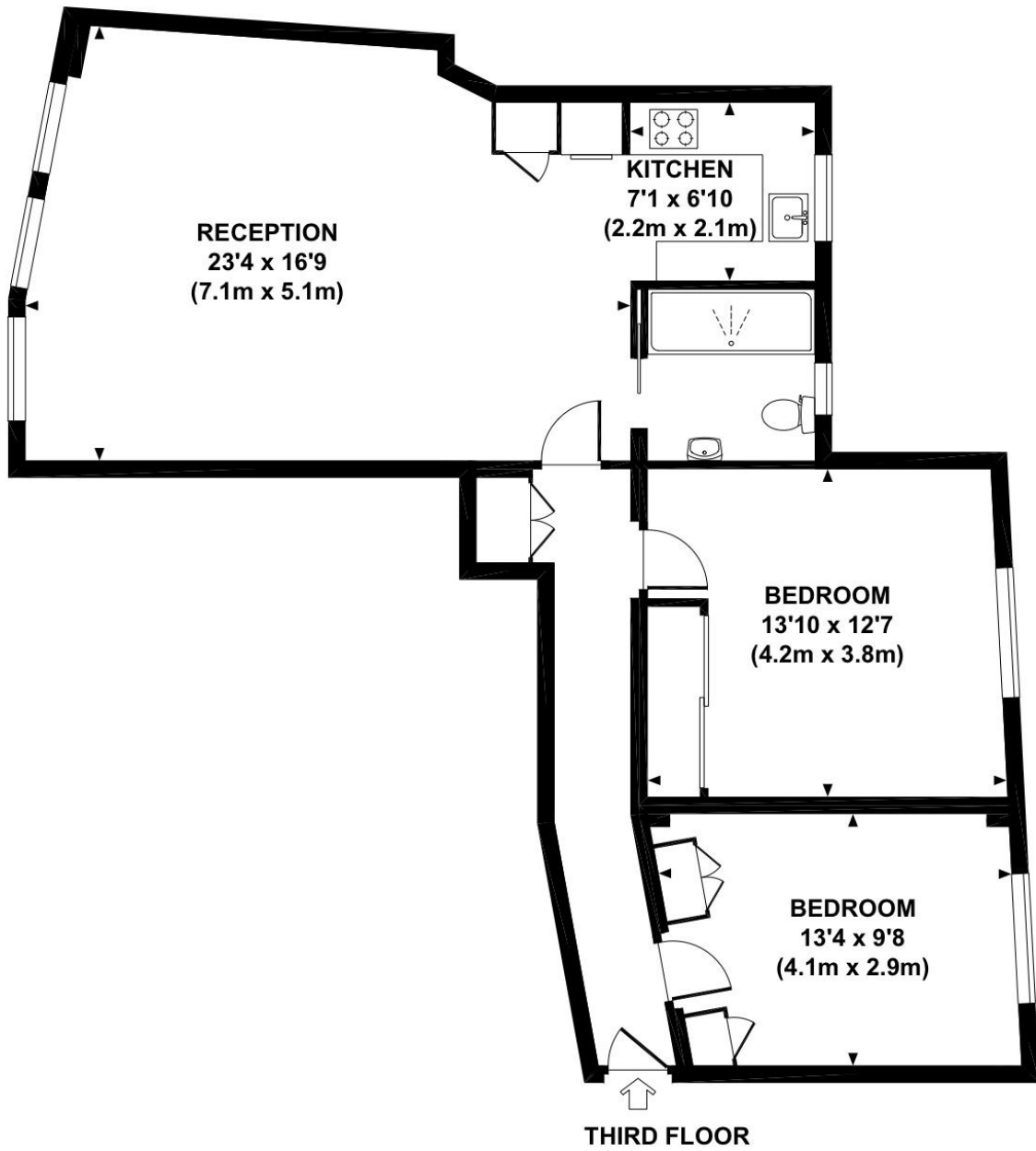
High Street Kensington
Notting Hill Gate
Holland Park



OLAF COURT, KENSINGTON CHURCH STREET, W8



Approx. gross internal area
875 Sq Ft. / 81 Sq M.



All measurements are approximate and for illustration purposes only as defined by the RICS Code of Measuring Practice © 2012 Dowling Jones Design www.dowlingjones.com 020 7610 9933

This floorplan is for illustration purposes only and is not to scale. The position and size of doors, windows, appliances and other features are approximate.

Kensington | 020 7727 1500 | kensington@winkworth.co.uk

