



Point West, Cromwell Road, South Kensington, London, SW7

£450 per week – Furnished

An interior-designed one bedroom, one bathroom apartment on the third floor of this secure, portered building.

1 Bedroom | 1 Reception Room | 1 Bathroom | Second Floor Flat | Balcony | Allocated Parking Space | 830 Approx sq ft | EPC: C

APPLICANT FEES MAY BE APPLICABLE

Winkworth

winkworth.co.uk

See things differently



DESCRIPTION

An interior-designed one bedroom, one bathroom apartment on the third floor (with lift) of this secure, portered building. It is located in the South Kensington area. It is fully furnished and is available from the 16th December 2019. The flat also comes with an allocated parking space.

ACCOMMODATION

1 Bedroom, 1 Reception Room,
1 Bathroom, Second Floor Flat, Balcony,
Allocated Parking Space, Furnished,
830 Approx sq ft

COUNCIL TAX BAND

Band G

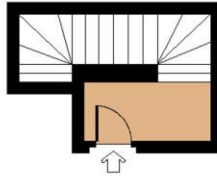


WEST POINT, CROMWELL ROAD, SW7

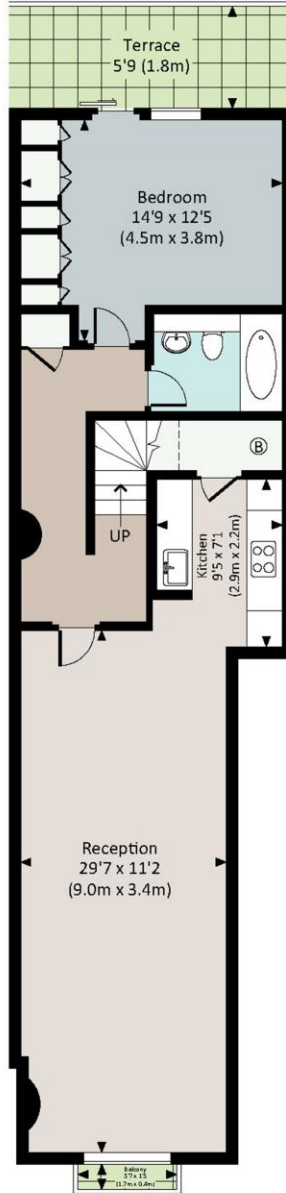
Approx. gross internal area

826 Sq.Ft. / 76.7 Sq.M.

830 Sq.Ft. / 77.1 Sq.M. Inc. Restricted Height Area



THIRD FLOOR



SECOND FLOOR

Energy Efficiency Rating		
	Current	Potential
Very energy efficient - lower running costs		
(92+) A		
(81-91) B		
(69-80) C	79	80
(55-68) D		
(39-54) E		
(21-38) F		
(1-20) G		
Not energy efficient - higher running costs		
England, Scotland & Wales	EU Directive 2002/91/EC	



All measurements are approximate and for illustration purposes only as defined by the RICS Code of Measuring Practice © 2014 Dowling Jones Design www.dowlingjones.com 020 7610 9933

This floorplan is for illustration purposes only and is not to scale. The position and size of doors, windows, appliances and other features are approximate.

South Kensington Lettings | 020 7370 6767 | lettings.southken@winkworth.co.uk



winkworth.co.uk

See things differently

Winkworth wishes to inform prospective buyers and tenants that these particulars are a guide and act as information only. All our details are given in good faith and believed to be correct at the time of printing but they don't form part of an offer or contract. No Winkworth employee has authority to make or give any representation or warranty in relation to this property. All fixtures and fittings, whether fitted or not are deemed removable by the vendor unless stated otherwise and room sizes are measured between internal wall surfaces, including furnishings.