



WIGMORE COURT, LONDON, W1U

£875,000 LEASEHOLD

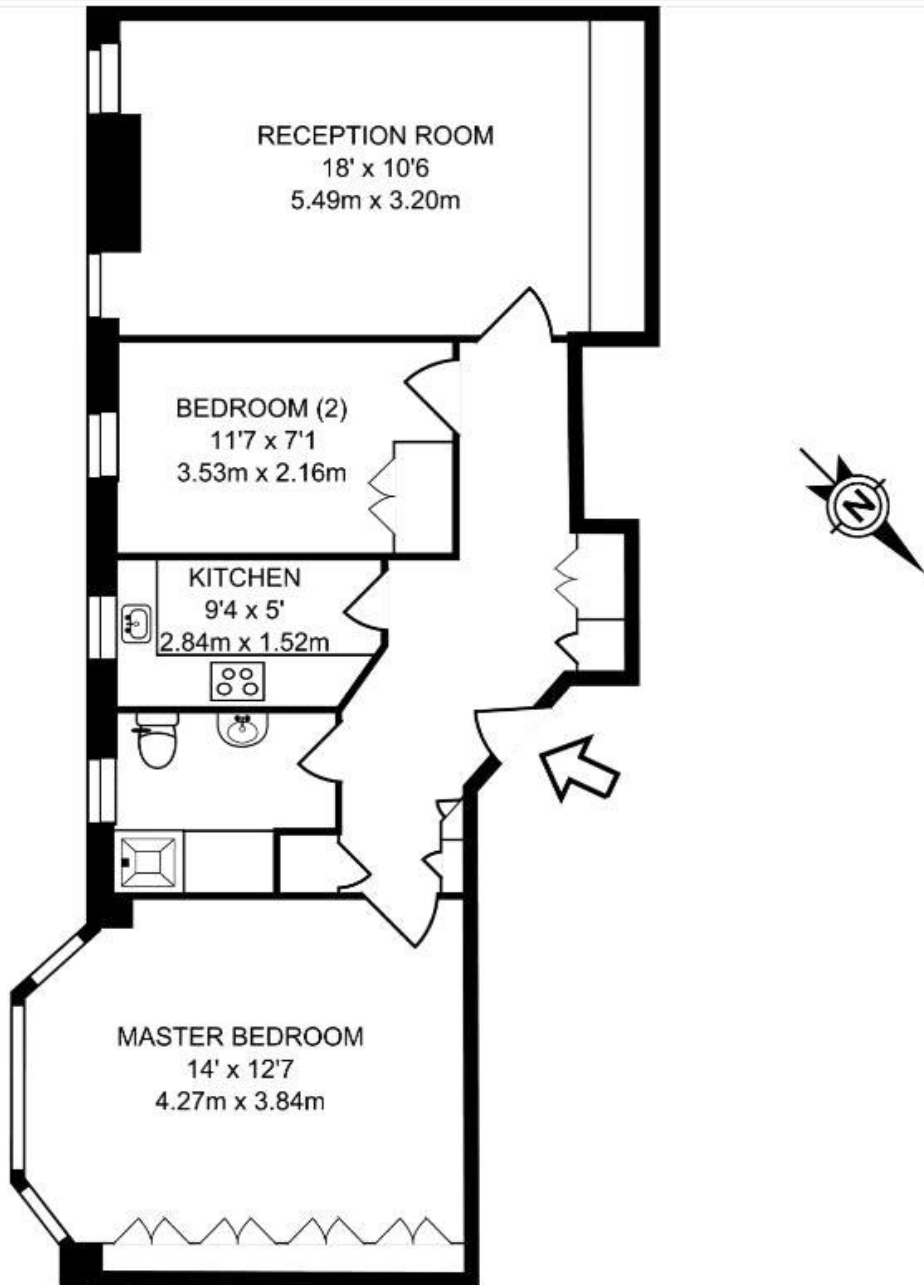
A rare opportunity to acquire a two bedroom, fifth floor, apartment (58.43 sq m/629 sq ft) set within this sought after purpose built block.

Further comprising a good size reception room, fitted kitchen and bathroom.

Benefiting from a resident porter and being superbly located on the section of Wigmore Street between Portman Square and Duke Street, close to the amenities of Marylebone High Street, the world famous Selfridges Department Store, the open spaces of both Hyde Park & Regents Park, and lastly Bond Street Underground Station (Central & Jubilee Lines) which as of 2018 will be part of the new Crossrail route.

Paddington & Bayswater | 020 7467 5770 | paddington@winkworth.co.uk

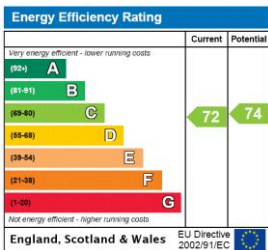
Winkworth



FIFTH FLOOR GROSS INTERNAL FLOOR AREA
629 SQ FT/58.43 SQ M

Representation of current layout, gross internal floor area is approximately 629 Sq Ft (58 Sq M)

This floorplan is for illustration purposes only and is not to scale. The position and size of doors, windows, appliances and other features are approximate.



Paddington & Bayswater | 020 7467 5770 | paddington@winkworth.co.uk

