



YEOMAN CLOSE, WEST NORWOOD, LONDON, SE27
£599,950 LEASEHOLD

FIVE DOUBLE BEDROOM TOWNHOUSE WITH OFF STREET PARKING

West Norwood | 02086700035 | westnorwood@winkworth.co.uk



DESCRIPTION:

A well presented five double bedroom, end of terrace townhouse. Further accommodation comprises; kitchen/diner, downstairs WC, reception room, bathroom, private rear garden and garage. The property also benefits from having off street parking and a new roof. The amenities of West Norwood are close to hand, as are the leisure centre and the newly open Picturehouse Cinema. Nearest transport is provided at West Norwood with its frequent services to London Bridge and Victoria.



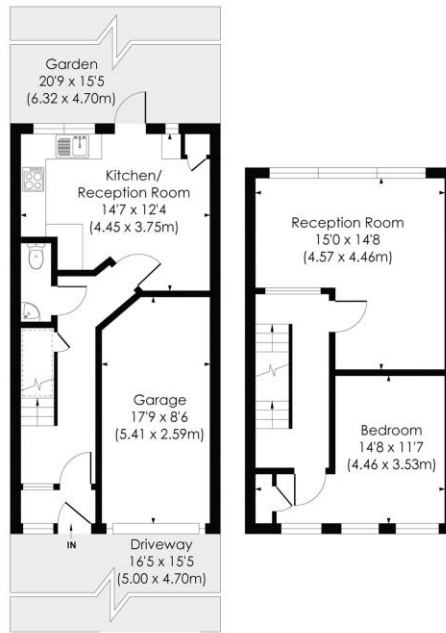


YEOMANS CLOSE, SE27

Approx. Gross Internal Floor Area
1522 Sq. ft/141.41 Sq. m



SECOND FLOOR



GROUND FLOOR

FIRST FLOOR

© Pixangle Property Marketing Ltd. info@pixangle.com Tel: 0208 870 2118

pixangle
PROPERTY MARKETING

This floor plan has been prepared for the purpose of illustration only in accordance with the latest RICS code of measuring practice and is not to scale. All measurements and areas are approximate and whilst every effort has been made to ensure the accuracy of the plan contained here, no responsibility is taken for any error, omission or misstatement.

This floorplan is for illustration purposes only and is not to scale. The position and size of doors, windows, appliances and other features are approximate.